

Foreword

This set of prints outline the construction of most everything needed to build a Sailfish from raw materials. They even include dimensions for constructing fittings such as the mainsheet blocks and rudder hardware from raw stock. Knowledge of metal forming, welding, sail making, and woodworking are implicit skills which need to be possessed or learned in order to work entirely from these drawings.

On behalf of the Sunfish_Sailor support group I would like to thank Jim Scarpa for procuring these instructions and drawings at his own expense. I would also like to express my gratitude to Jim for making these pages available to the Sailfish and Sunfish community free of charge.

Many thanks also go to Peter Sarelis for his digitizing expertise and to his wife and children for putting up with the long hours he spent burning the candle at both ends while turning 40+ year old dog-eared instructions back into legible documents.

My Sincere appreciation,

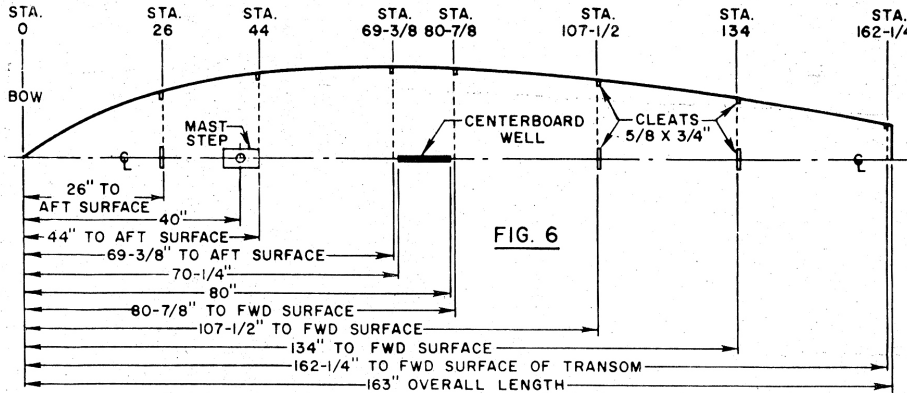
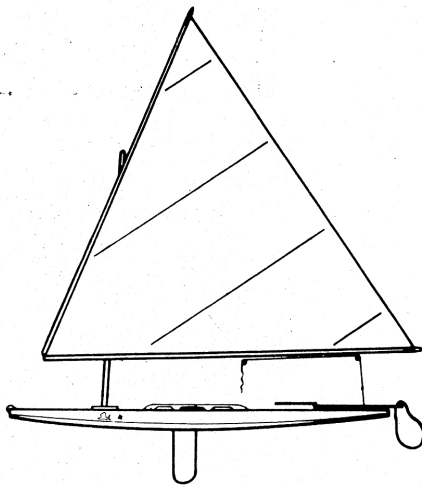
Wayne Carney

Sunfish_Sailor

Sailfish®



ALCORT, Inc.,



STATION (INCHES FROM BOW)	HALF WIDTH (INCHES)	FULL WIDTH (INCHES)
5	5-1/2	11
10	8	16
15	10-1/4	20-1/2
20	12	24
30	14-1/4	28-1/2
40	16-1/4	32-1/2
50	17-1/2	35
60	18-1/8	36-1/4
70	18-1/4	36-1/2
80	18	36
90	17-1/2	35
100	17	34
110	16-1/8	32-1/4
120	15-1/8	30-1/4
130	14	28
140	12-1/2	25
150	11	22
160	9-1/2	19

FIG. 9

THESE DIMENSIONS TO BE USED FOR LAYING OUT DECK PLANK (FULL WIDTH) & BOTTOM PLANK (HALF WIDTH) OUTLINES ON 1/4" PLYWOOD.

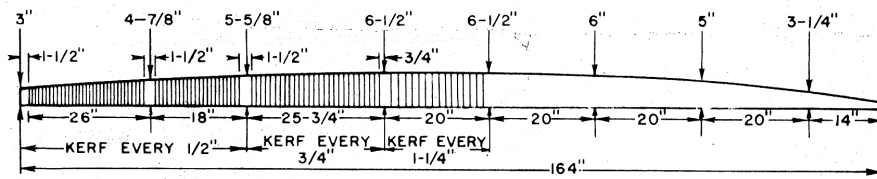
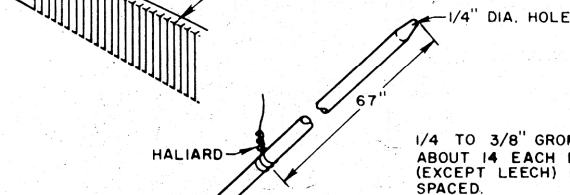
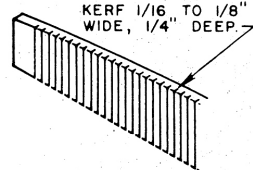


FIG. 7



TO MAKE 1" HEM & 3/8" TURN-UNDER, ADD 2-3/4" TO LENGTH OF STRIP.

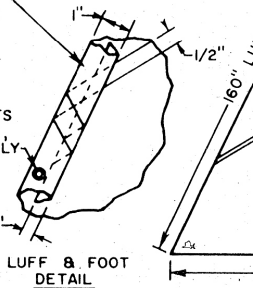


FIG. 18

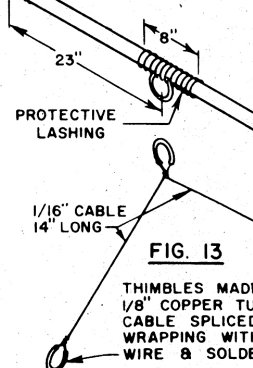
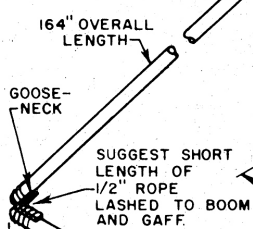


FIG. 13

BOOM & GAFF 1-1/2" DIA. SITKA SPRUCE

FIG. 16

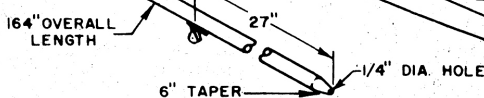


FIG. 15

THIS DRAWING APPLICABLE IF 4" WIDE MATERIAL (WITH SELVEDGE) IS AVAILABLE. HOWEVER, ANY WIDTH CAN BE USED. IF NOT "SELVEDGED" THEN A 1/4" TURN-UNDER SHOULD BE USED WITH THE 1/2" OVERLAP.

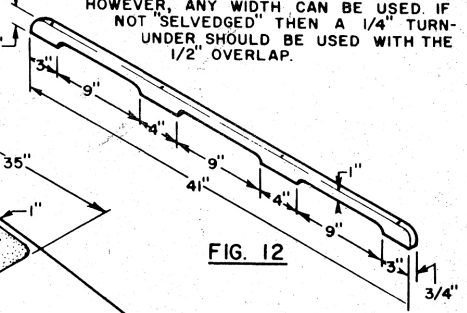
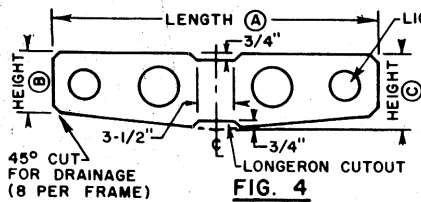


FIG. 12



STATION	(A)	(B)	(C)
26	24-1/16"	4-7/16"	6-13/32"
44	31-3/8"	5-5/16"	7-19/32"
69-3/8"	34-1/4"	6-1/16"	8-3/32"
80-7/8"	33-5/8"	6-1/8"	7-15/16"
107-1/2"	30-1/2"	5-5/8"	7-3/32"
134	24-7/16"	4-1/8"	5-3/8"
162-1/4"	15-13/16"	1-9/16"	2-7/8"

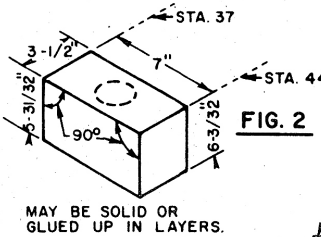
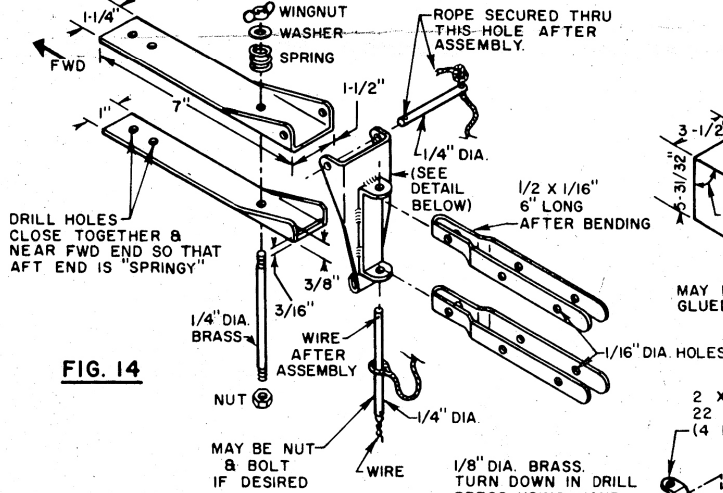
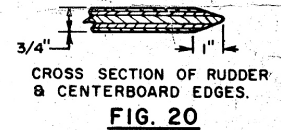
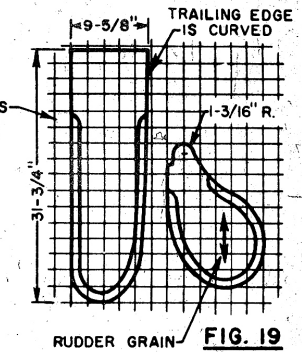
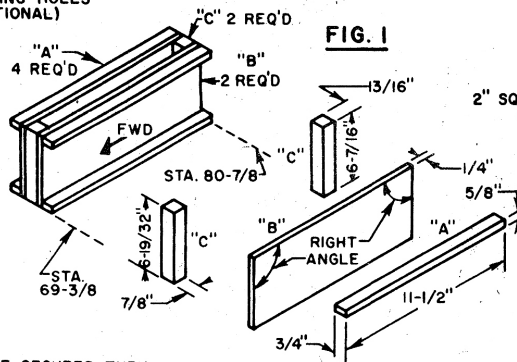


FIG. 2

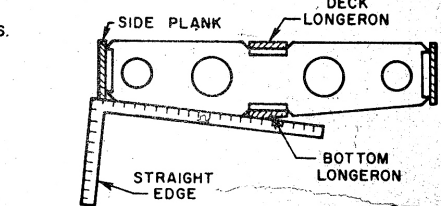


FIG. 8

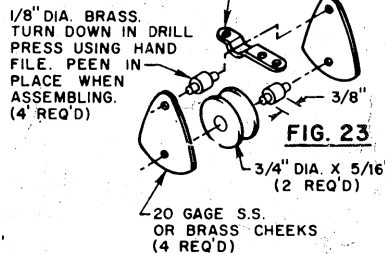
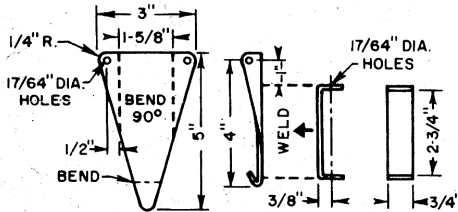


FIG. 23

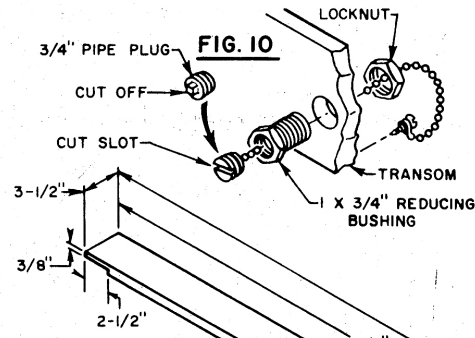
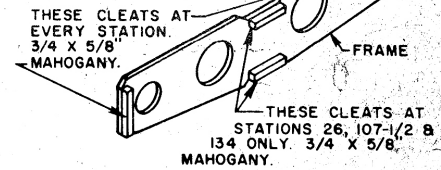


FIG. 10

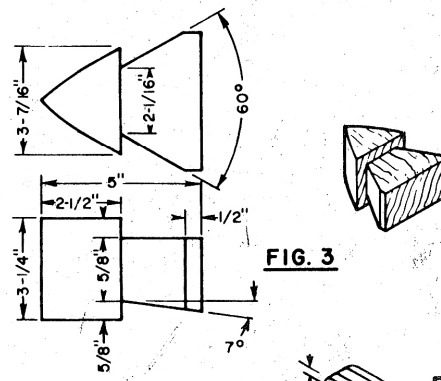


FIG. 3

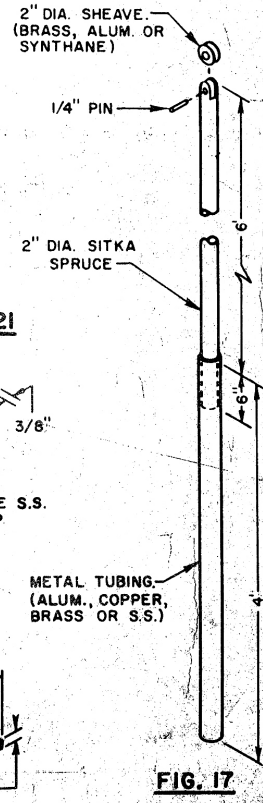


FIG. 17

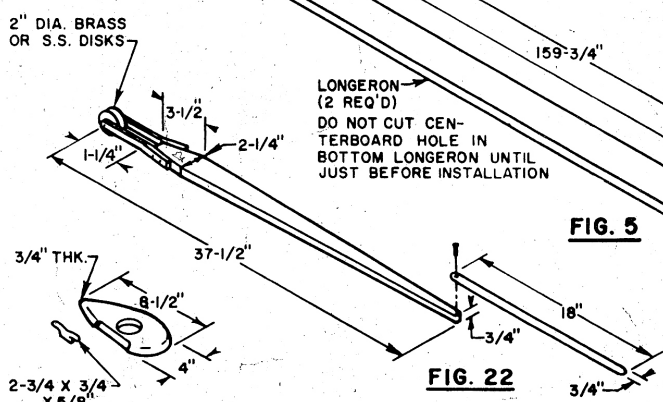


FIG. 22

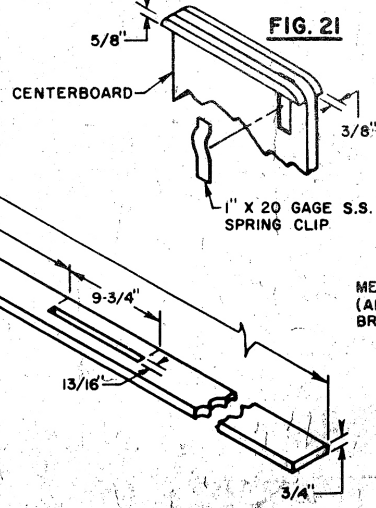


FIG. 21

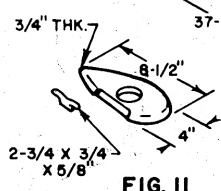


FIG. 11